



8th Grade Presentation

2023-2024 School Year



GREAT LAKES
LEARNING
ACADEMY



School Counseling Team



Patrick Sullivan
Manager of Counseling Services

P 810-620-7579

[Webmail](#)

patsullivan@glla.connectionsacademy.org



Monica Conklin
Counselor assigned to students with last names:
H-P

P 616-541-4118

[Webmail](#)



Courtney Paul
Counselor assigned to students
with last names: *A-G*

P 810-447-0141

[Webmail](#)



Veronica Bridges
Counselor assigned to students with last names:
Q-Z

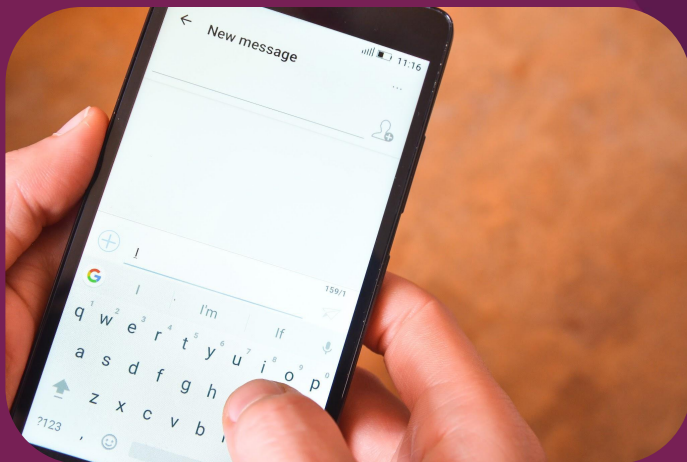
P 616-541-5409

[Webmail](#)



How can I contact my teachers and counselors?

- Webmail
- LiveLessons
- Phone calls/text messages





What are we talking about?

- Study skills and time management in an online school
- What's high school going to look like?
- High school course selection process preview
- State Testing
- Educational Development Plans (EDPs)
- Clubs and Activities



Study Skills and Time Management

- Learn how you work best
 - Are you someone who needs to be in complete silence? Do you need to listen to music?
- Utilize your Planner
- Create a plan for your day
 - When will you work on what? What assignments or projects will you be working on today?
- Stay organized!
 - Keep all physical papers in folders for each class they pertain to
 - Keep your digital assignments in their own folders as well





What's high school going to look like?

- High school uses quarters, not semesters!
 - Four quarters in a year, one semester is two quarters
- In high school, grades matter!
 - If you fail a class, you will have to retake it
 - If you plan on going to a college or university after high school you will want to keep your GPA up
- In high school you will need 22 credits total to graduate
 - Each class you take is worth 0.5 credits
 - Some classes will be split into 2 parts, for example English 9 A and English 9 B
 - On average each student will take 6 credits total a year



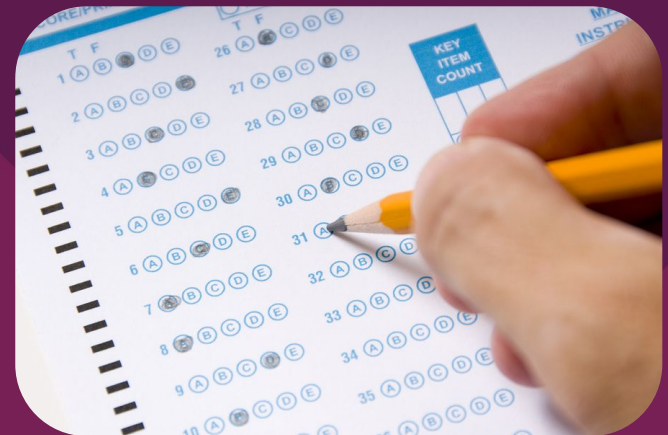
What will course selection look like in high school?

- If you will be coming back to GLLA the counseling department will send out a survey to you, asking for what classes you would like to take
- 9th graders will all take English 9, Algebra 1, Biology, US History, PE, and Health by default
- You will be able to choose if you would like to take a World Language, and Art, or an elective
- Your school counselor will then start to make your schedule for your freshman year!



State Testing

- Even though we're online, there will be some state tests that you will have to take in person
 - Testing locations are assigned by area you live in
 - Most locations are in hotel conference rooms, Lansing location is at the GLLA office
- In person test for 6th and 7th graders
 - M-STEP
- Online tests for 6th and 7th graders
 - NWEA
- Ms. Enriquez is the Testing Coordinator





Educational Development Plan (EDP) - Xello

- My EDP Activities
 - Xello is a way for you to start planning “what do I want to be when I grow up”
- Each grade has lessons to complete
- You either have an email or will be getting an email with login information
- Mr. Wells has put together a video about Xello
- <https://watch.screencastify.com/v/rOJgiVzDxRsLDQb8aiec>





Clubs and Activities

- Art Club
- Arts and Crafts Club
- Chess Club
- Esports
- Conversation Corner
- Debate Club
- Drama Club
- Gaming and Technology Club
- Global Trek Club
- Kindness Club
- Leadership Club
- Movement Club
- Science Sleuths
- Writers' Oasis



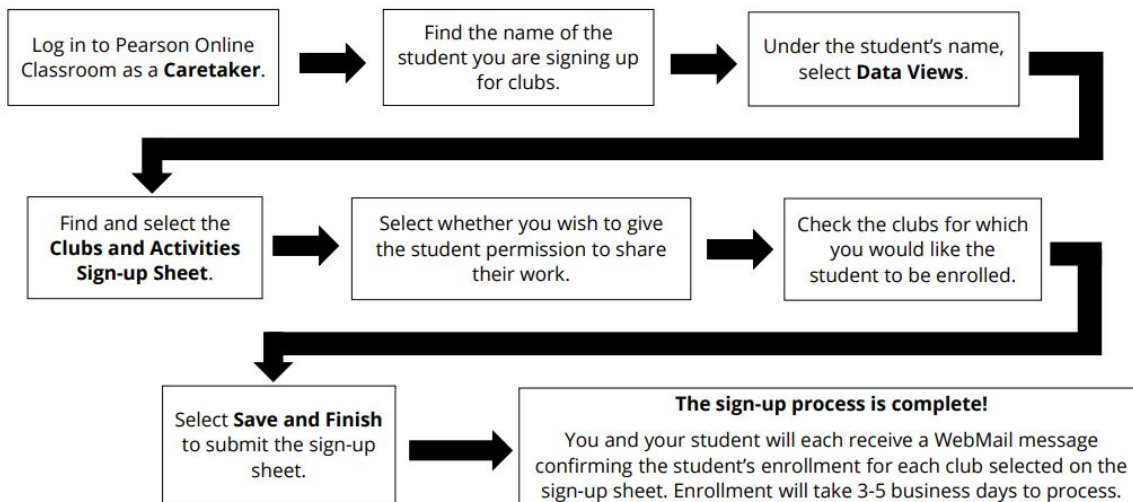


Signing up for Clubs

How to Sign Up for Clubs



Global Clubs and Activities



NOTE TO CARETAKERS: The submission of a student's original work serves as Caretaker consent to allow the student to participate in Global Clubs & Activities at Connections Academy or Pearson Online Academy, to have the work published or displayed (along with the student's first name and last initial) to any audience and in any print or digital medium, including social media.



www.classroom.pearson.com



Provide Feedback

Welcome to Pearson Online Classroom

 Remember my username[Did you forget your password?](#)

Are you having any trouble with the system?
Call or email a Support Representative. We can help!

📞 1-800-382-6010 ✉️ support@connextus.com

Use only if directed by a
Support Representative.

[Get Interactive Support](#)



Art Club

- exploration of different media and techniques
- collaborative work with other students, including critiques and feedback
- an active Message Board
- sure to inspire, challenge, and motivate creativity

2023-2024 Schedule of LiveLesson® Sessions

Grades 6–8 on select Mondays: 1 p.m. Eastern, 12 p.m. Central, 11 a.m. Mountain, 10 a.m. Pacific	Grades 9–12 on select Tuesdays: 3 p.m. Eastern, 2 p.m. Central, 1 p.m. Mountain, 12 p.m. Pacific	Live Artmaking monthly on Thursdays: 2 p.m. Eastern, 1 p.m. Central, 12 p.m. Mountain, 11 a.m. Pacific																																																								
<table border="0"><tr><td>October 2</td><td>February 5</td></tr><tr><td>October 9</td><td>February 12</td></tr><tr><td>October 16</td><td>February 26</td></tr><tr><td>October 23</td><td>March 4</td></tr><tr><td>October 30</td><td>March 11</td></tr><tr><td>November 6</td><td>March 18</td></tr><tr><td>November 13</td><td>March 25</td></tr><tr><td>November 20</td><td>April 1</td></tr><tr><td>November 27</td><td>April 8</td></tr><tr><td>December 4</td><td>April 15</td></tr><tr><td>December 11</td><td>April 22</td></tr><tr><td>January 8</td><td>April 29</td></tr><tr><td>January 22</td><td>May 6</td></tr><tr><td>January 29</td><td></td></tr></table>	October 2	February 5	October 9	February 12	October 16	February 26	October 23	March 4	October 30	March 11	November 6	March 18	November 13	March 25	November 20	April 1	November 27	April 8	December 4	April 15	December 11	April 22	January 8	April 29	January 22	May 6	January 29		<table border="0"><tr><td>October 3</td><td>February 6</td></tr><tr><td>October 10</td><td>February 13</td></tr><tr><td>October 17</td><td>February 20</td></tr><tr><td>October 31</td><td>February 27</td></tr><tr><td>November 7</td><td>March 5</td></tr><tr><td>November 14</td><td>March 12</td></tr><tr><td>November 21</td><td>March 19</td></tr><tr><td>November 28</td><td>March 26</td></tr><tr><td>December 5</td><td>April 2</td></tr><tr><td>December 12</td><td>April 9</td></tr><tr><td>January 9</td><td>April 16</td></tr><tr><td>January 16</td><td>April 23</td></tr><tr><td>January 23</td><td>April 30</td></tr><tr><td>January 30</td><td>May 7</td></tr></table>	October 3	February 6	October 10	February 13	October 17	February 20	October 31	February 27	November 7	March 5	November 14	March 12	November 21	March 19	November 28	March 26	December 5	April 2	December 12	April 9	January 9	April 16	January 16	April 23	January 23	April 30	January 30	May 7	<p>October 19 November 16 December 14 January 25 February 22 March 21 April 25 May 9</p>
October 2	February 5																																																									
October 9	February 12																																																									
October 16	February 26																																																									
October 23	March 4																																																									
October 30	March 11																																																									
November 6	March 18																																																									
November 13	March 25																																																									
November 20	April 1																																																									
November 27	April 8																																																									
December 4	April 15																																																									
December 11	April 22																																																									
January 8	April 29																																																									
January 22	May 6																																																									
January 29																																																										
October 3	February 6																																																									
October 10	February 13																																																									
October 17	February 20																																																									
October 31	February 27																																																									
November 7	March 5																																																									
November 14	March 12																																																									
November 21	March 19																																																									
November 28	March 26																																																									
December 5	April 2																																																									
December 12	April 9																																																									
January 9	April 16																																																									
January 16	April 23																																																									
January 23	April 30																																																									
January 30	May 7																																																									



Arts and Crafts Club

- exploration of different media and techniques through craft instruction
A Message Board sure to inspire, challenge, and motivate creativity live artmaking and peer feedback in each LiveLesson session

On select Wednesdays:

3 p.m. Eastern, 2 p.m. Central, 1 p.m. Mountain, 12 p.m. Pacific

October 4
October 18
November 1
November 15
November 29
December 13
January 10
January 24

February 7
February 21
March 6
March 20
April 3
April 17
May 1



Chess Club

- online chess
- gaming expert guest speakers
- chess tournaments
- interactive discussions on the Message Board

2023-2024 Schedule of LiveLesson® Sessions

Introduction to Chess Lesson on select Tuesdays: 2 p.m. Eastern, 1 p.m. Central, 12 p.m. Mountain, 11 a.m. Pacific	Advanced Chess Lesson on select Tuesdays: 2 p.m. Eastern, 1 p.m. Central, 12 p.m. Mountain, 11 a.m. Pacific	Combined Game Play Session on select Tuesdays: 2 p.m. Eastern, 1 p.m. Central, 12 p.m. Mountain, 11 a.m. Pacific
October 3 November 21 December 19 January 9 February 13 March 12 April 9	October 10 November 7 December 5 January 16 February 20 March 19 April 16	October 17 November 14 December 12 January 23 February 27 March 26 April 23 April 30



Esports Club

Mr. Thrower is the GLLA advisor!

<https://glla-thrower.weebly.com/esports.html>

- Our goal is to build a community that promotes socialization and fosters positive relationships. We need competitive gamers to field teams for competition, but you do not have to play the game to participate. There are many other ways to get involved like **shoutcasting**, **streaming**, **graphic design**, **web design**, and **marketing**.



Calling All Gamers and Esports Fans!

Connections Academy Esports is available at your school!

COMPETE IN THE HIGH SCHOOL ESPORTS LEAGUE IN THE FOLLOWING GAME TITLES:

Rocket League
Valorant
Super Smash Bros. Ultimate
Splatoon 3
Mario Kart 8 Deluxe

NOT A COMPETITIVE GAMER?
NOT A PROBLEM!

Other ways to get involved:
Shoutcasting
Streaming
Data Collection & Analysis
Marketing





Conversation Corner

- supportive community for diverse learning styles and speaking proficiencies an inclusive, safe, structured space for all learners and beautiful brains
- communicate on microphone and discussion areas connections through shared experiences while cultivating empathy facilitated by Speech Language Pathologists

Monthly on Fridays:

2 p.m. Eastern, 1 p.m. Central, 12 p.m. Mountain, 11 a.m. Pacific

October 6
November 3
December 1
January 5

February 2
March 1
April 5
May 3



Debate Club

- Public speaking and critical thinking
- Collaborative work with other students on teams
- Research, reasoning, and persuasive and informative writing techniques
- Appreciation of opposing perspectives

On Select Wednesdays:

1 p.m. Eastern, 12 p.m. Central, 11 a.m. Mountain, 10 a.m. Pacific

October 11
October 18
November 15
November 29
December 6
January 17
January 31

February 7
February 21
March 13
March 27
April 3
April 17
May 8



Drama Club

- Exploration of the world of theater, including performance and stage management
- Collaborative work with other students on creative projects
- Active Message Board sure to inspire, challenge, and motivate creativity

On Select Thursdays:

3 p.m. Eastern, 2 p.m. Central, 1 p.m. Mountain, 12 p.m. Pacific

October 5
October 26
November 2
November 16
November 30
December 14
January 11
January 25

February 1
February 15
March 7
March 21
April 4
April 18
May 2



Gaming and Technology Club

- student sharing and collaborations in gaming opportunities to learn computer coding

2023-2024 Schedule of LiveLesson® Sessions

Grades 6-8 on select Wednesdays: 2 p.m. Eastern, 1 p.m. Central, 12 p.m. Mountain, 11 a.m. Pacific	Grades 9-12 on select Wednesdays: 2 p.m. Eastern, 1 p.m. Central, 12 p.m. Mountain, 11 a.m. Pacific	Joint Session for grades 6-12 monthly on Fridays: 1 p.m. Eastern, 12 p.m. Central, 11 a.m. Mountain, 10 a.m. Pacific
October 4 October 18 November 8 November 29 December 13 January 10 January 24 February 7 February 21 March 6 March 20 April 3 April 17 May 1	October 11 November 1 November 15 December 6 December 13 January 17 January 31 February 14 February 28 March 13 March 27 April 10 April 24 May 8	October 20 November 17 December 8 January 19 February 16 March 8 April 19



Global Trek Club

- Exploration of the seven continents through travel, culture, and geography
- Opportunities to share knowledge and passion of travel experiences
- Active Message Board sure to inspire, challenge, and motivate creativity

On select Thursdays:

3 p.m. Eastern, 2 p.m. Central, 1 p.m. Mountain, 12 p.m. Pacific

October 12
November 9
December 7
January 18

February 8
March 14
April 11
May 9



Kindness Club

- Opportunities to encourage and inspire virtual students from around the country and the world
- Regular challenges to scatter kindness throughout our communities
- Optional Club Course and Message Board, sure to motivate creativity

On select Thursdays:

12 p.m. Eastern, 11 a.m. Central, 10 a.m. Mountain, 9 a.m. Pacific

October 5
November 2
December 7
January 11

February 1
March 7
April 4
May 2



Leadership Club

- Community involvement and leadership skills
- LiveLesson® sessions on select Mondays at 2pm ET
- Opportunity to earn a Leadership Certificate
- Collaboration with other club members on projects
- Discussions on the Message Board

Monthly on Select Mondays:

2 p.m. Eastern, 1 p.m. Central, 12 p.m. Mountain, 11 a.m. Pacific

October 9
November 6
December 11
January 8
February 12
March 4
April 8
May 6



Movement Club

- Exploration of different techniques to promote movement and healthy habits
- Active Message Board sure to inspire, challenge, and motivate movement
- Guest speakers, student sharing and showcasing

On select Mondays:

2 p.m. Eastern, 1 p.m. Central, 12 p.m. Mountain, 11 a.m. Pacific

October 2
October 16
October 30
November 13
November 27
December 4
January 22
February 5
February 26
March 11
March 25
April 15
April 29



Science Sleuths

- a lot of fun (and wild/weird) science activities
- LiveLesson ® sessions throughout the year
picture, video, and result
- sharing with club members
discussions on the club 's
Message Board

**Eight sessions throughout the school
year on selected Wednesdays**

1 p.m. Eastern, 12 p.m. Central, 11 a.m. Mountain, 10 a.m. Pacific

October 4

November 1

December 13

January 24

February 14

March 6

April 10

May 1



Writers' Oasis

- Exploration of different literary genres
- Collaborative work with other students, including critiques and feedback
- Opportunity to contribute to The Monitor blog
- Active Message Board with discussions on favorite books and authors

Grades 6-8 on select Mondays:

3 p.m. Eastern, 2 p.m. Central,
1 p.m. Mountain, 12 p.m. Pacific

October 2
October 16
November 6
November 20
December 4
December 18
January 8
February 5
February 12
March 4
March 18
April 1
April 15
May 6

Grades 9-12 on select Mondays:

3 p.m. Eastern, 2 p.m. Central,
1 p.m. Mountain, 12 p.m. Pacific

October 9
October 23
November 13
November 27
December 11
December 18
January 22
February 12
February 26
March 11
March 25
April 8
April 22
May 6



Questions?