

2024-2025 Course Selection Process

Presented by the GLLA School Counseling Department

Course Selection Timeline

- February 22nd/29th: presentation on the process
- March 22nd: last day to complete Google form
- April: CPT will be open and courses can be entered by school counselors
- May: schedule adjustments

GRADUATION REQUIREMENTS (World Language Track)

Language Arts	4 credits	English 9, 10, 11, 12
Math	4 credits	Including Algebra, Geometry, and Algebra 2
Science	3 credits	Including Biology, Chemistry or Physics
Social Studies	3 credits	Including United States History, World History, Economics, and American Government
Physical Education/Health	1 credit	0.5 credit of each course
Fine Arts	1 credit	Visual, Performing, or Applied Art
World Language	2 credits	Two years of the same language
Other Electives	4 credits	Traditional High School Students

GRADUATION REQUIREMENTS

(Applied Arts Track)

Language Arts	4 credits	English 9, 10, 11, 12
Math	4 credits	Including Algebra, Geometry, and Algebra 2
Science	3 credits	Including Biology, Chemistry or Physics
Social Studies	3 credits	Including United States History, World History, Economics, and American Government
Physical Education/Health	1 credit	0.5 credit of each course
Fine Arts	2 credits	Visual, Performing, or Applied Art
World Language	1 credit	One year of the same language
Other Electives	4 credits	Traditional High School Students

Typical Course Progression

Course Category	9th	10th	11th	12th
English	English 9	English 10	English 11	English 12
Math	Algebra 1	Geometry	Algebra 2	Consumer Math or Pre-Calculus
Science	Biology	Chemistry, Physics, or Anatomy	Other Science	
Social Studies	US History	World History	Government or Economics	
Elective Option 1	Health .5 Physical Education .5	Visual Performing Arts and Applied Arts	Any Elective	Any Elective
Elective Option 2	World Language	World Language or Applied Arts	Any Elective	Any Elective

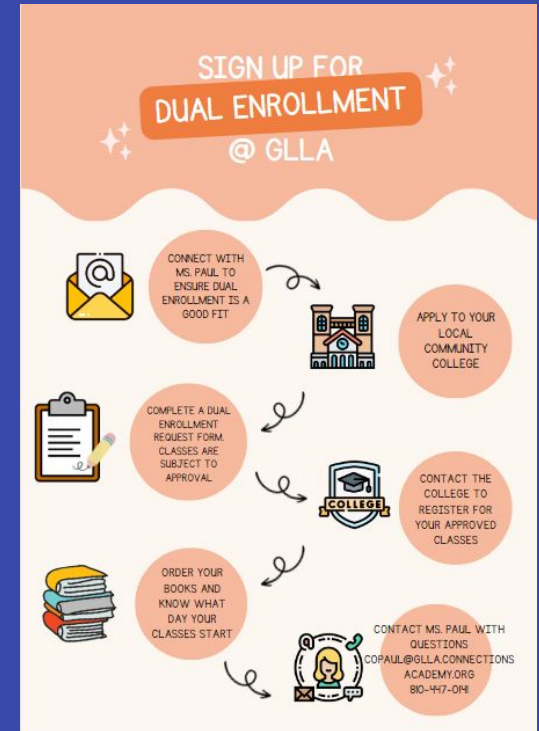
Grade Level Credit Requirements

Classification	Grade Level	# of Credits
Freshman	9	0-4
Sophomore	10	5-9
Junior	11	10-15
Senior	12	16+

***Each class at GLLA = .5 credit**

Dual Enrollment/CTE Courses

- Opportunity to pursue courses outside of GLLA
- DE courses = offered at local colleges
- CTE courses = offered by ISD
- Both require communication with school counselor and appropriate paperwork (follow deadlines)
- Final grades will be posted on GLLA transcript



CTE Pathways

- Courses that are offered through GLLA
- Focus on a particular career cluster
 - Health Sciences
 - Information Technology
 - Business Information
- Coursera courses = Social Media, Cyber-security, Digital Marketing

CTE = Career Technical Education

Next Steps

- Discuss academic goals with parents/guardians
- Fill out [Google Form](#) in its entirety
- Check in with HR teachers (ITR) and school counselors with questions



Questions?